



# Honpa Hongwanji Mission of Hawaii

## HEADQUARTERS UPDATE

1727 Pali Highway, Honolulu, Hawaii 96813

Phone: (808) 522-9200 Fax: (808) 522-9209

Web: [www.hongwanjihawaii.com](http://www.hongwanjihawaii.com) Email: [hqs@honpahi.org](mailto:hqs@honpahi.org)



JUNE 2019

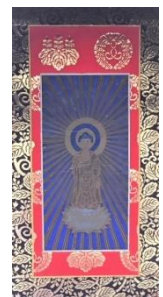
### BISHOP'S CORNER

Bishop Eric Matsumoto



As we enter the Summer, right around the corner is the Fourth of July holiday. While it is a time to relax and celebrate with picnics and fireworks, let us not forget the significance of the Holiday. The most well-known icon of the United States of America, the Statue of Liberty holds a tablet in her arms with the date July 4, 1776 written on it. Further, on the pedestal at the base of the statue it says *"Give me your tired, your poor, your huddled masses yearning to breathe free."* In recent times, with all that is happening in our troubled Nation and around the World and also our own observance of the 150<sup>th</sup> Anniversary of the First Japanese Arrival in Hawaii, I have found new inspiration and appreciation of what America stands for and the hope it gives to millions and millions of people all over the world especially to immigrants. As I reflect, my own maternal great grandparents immigrated to Hawaii in 1899 with the hope and dream of a better life. Life was hard and the challenges many, but with each passing generation life improved and their descendants, of which I am only one, are grateful for their decision and struggles.

However, there is another reason for which I am grateful. My family, both maternal and paternal, were also Nembutsu followers. As they immigrated to a new land, they also brought with them their religion, Jodo Shinshu. The Jodo Shinshu Teachings, the Nembutsu provided them with hope, strength, courage and stability in a world and life that, at first, was foreign, unfamiliar and froth with uncertainties in so many ways. It was the one beacon that was stable, unchanging, constant and ever present which they knew they could rely upon no matter what else happened. As the Great Pure Land Master Shan-tao said, ***"The Buddha embraces never to forsake, thus, the Buddha is named Amida."*** Hence, my maternal grandparents brought with them a scroll of Amida Buddha. This scroll was given to Tamayo and myself on our wedding day at the Reception with all of the guests and family in attendance as witnesses. For me, it is an expression of the aspiration that Tamayo and I, as individuals, would also become aware of and appreciate the Great Wisdom and Compassion of Amida Buddha and Shinran Shonin's aspiration of "May there be peace in the world and may the Buddha's Teaching spread!" The message of All-Inclusive Wisdom and All-Embracing Compassion is the attainment of Supreme Enlightenment equally by one and all including and especially of this imperfect and limited self. This promise has not changed and continues to call out to each and every one of us.



Most recently, at the World Jodo Shinshu Coordinating Council Meeting held in Kyoto, attended by our State President Pieper Toyama and Executive Assistant to the Bishop Rev. Kazunori Takahashi, I had the honor of giving the following greeting at a dinner.

“Tonight, on behalf of the 4 Overseas Districts (of Buddhist Churches of America, Jodo Shinshu Buddhist Temples of Canada, South America Hongwanji Mission, and Honpa Hongwanji Mission of Hawaii), I would like to offer our sincere greetings and also our deepest appreciation.

In this ancient capital of Kyoto wrapped in the verdure of Early Summer to His Eminence Gomonshu Kojun Ohtani and the Members of the Board of Governors and all others (of the various departments) with whom we have the pleasure of meeting as Fellow Travelers who rejoice in the Nembutsu, it is such a pleasure and joy to meet you.

Further, as we heard, earlier today, from the Governor General Bishop Chiko Iwagami about the focus of our Denomination based on the words of Shinran Shonin and brought about by the guidance of Gomonshu on the importance of how we live our life as Nembutsu Followers, and the needed new approach as we reach out to others to share the Nembutsu Dharma, we of the Overseas Districts too, pledge to do our utmost by embracing it and will try our best to share the Nembutsu Teachings in a way that will resonate with others.

Also, I would like to express our appreciation for the continuous support and guidance we receive from all of you (in Japan) including the Hongwanji International Center Staff not only for this Coordinating Council Meeting, but always. Lastly, thank you for this Fellowship Dinner which will strengthen our bond with each other as a world-wide Hongwanji Sangha. Thank you very much. Namo Amida Butsu.”

It is the sincere aspiration of Gomonshu that more people will come to know about the Great Wisdom and Compassion of Amida Buddha and the Denomination with new energy is moving to make this a reality. In Hawaii Kyodan’s 130<sup>th</sup> Anniversary year in Hawaii with our 2019 Theme and Slogan of *Embrace Change: Transformation (Walk in Peace)* and as we head towards the 850<sup>th</sup> Anniversary of Shinran Shonin’s Birth and the 800<sup>th</sup> Anniversary of the Establishment of the Jodo Shinshu Teachings (in 2023) may we each also embrace Amida Buddha’s, Shinran Shonin’s and Gomonshu Kojun Ohtani’s aspiration as people of Nembutsu. Namo Amida Butsu.

## **PRESIDENT’S REPORT**

Pieper J. Toyama, President

This year I am focusing my time and attention on four issues. At the half-way point in the year, I want to report on progress made on the four areas.

1. EVALUATING TEMPLE LANDS TO DETERMINE REVENUE-PRODUCING OPPORTUNITIES
  - a. We have sent letters to temples to be evaluated.
  - b. Consultant Harry Yada of Hilo Betsuin has begun to look at deeds and leases.
  - c. Among the land holdings that is being assessed is the Buddhist Study Center.
  - d. Temples whose lands are being evaluated may meet with the Bishop and me to discuss the project.

2. PLANNED GIVING PROGRAM\* FOR INDIVIDUAL TEMPLES
  - a. A Pilot Project may include the Aiea, Hilo Betsuin, Jikoen, Windward, Wailuku, and Puna temples.
  - b. The materials and information that will be shared at the training sessions for temples participating in the Pilot Project are being developed.
  - c. The target month for piloting temples to launch is this coming Fall in conjunction with Eitaikyo Services.
  - d. *\*Planned Giving is a way of leaving funds to a temple after one's passing.*
3. IMPROVING COMMUNICATIONS BETWEEN HQ AND ALL TEMPLE MEMBERS
  - a. The June and December issues of the **HQ Update** will share the breadth of Hawaii Kyodan activities that are happening throughout the state.
  - b. All temples are requested to include the entire June and December issues of the **HQ Update** in their monthly newsletter.
  - c. This effort will help to insure that all of our members know of the activities of Hawaii Kyodan. In this way, we hope to give meaning to being a member of Hawaii Kyodan.
4. HAWAII KYODAN FUNDRAISER
  - a. We have not yet taken any action on this initiative.
5. TEMPLE CONSOLIDATION
  - a. At the May meeting of the Board of Directors, Bishop Matsumoto reported that the Research and Planning Committee has opened discussions on guidelines for Temple Consolidation or Temple Closing. Bishop emphasized that any change in status of a temple should be smooth and well thought-out and benefit all. He explained that HQ's involvement will focus on developing a win-win situation for all entities involved.

## WORLD JODO SHINSHU COORDINATING COUNCIL MEETING

Pieper J. Toyama, President

Each year the bishops and the presidents from the overseas districts gather to discuss issues shared by overseas Hongwanji temples. This annual gathering is called the **World Jodo Shinshu Coordinating Council Meeting**. This year Bishop Matsumoto, Rev. Takahashi, and I represented Hawaii Kyodan.

The single item of importance to all overseas districts was the establishment and funding of the **Jodo Shinshu International Office (JSIO)** that will be located in San Francisco. We have been tracking the development of this office for over three years so it was exciting to learn that it will become a reality this year.

The purpose of the **JSIO** is to provide the world's people with more opportunities to encounter the Nembutsu teachings.

The priority projects of the **JSIO** include: 1. Further development of Existing Programs (International Ministerial Orientation Program [IMOP] and the Jodo Shinshu Correspondence Course [JSCC]. 2. Development of New Programs (educational materials for ministers, quarterly journal, website, English-language publications, Buddhist Speakers Bureau, activities to connect overseas ministers with ministers in Japan).

Future projects under consideration include: 1. Studies of doctrine. 2. Research of effective propagation methods. 3. Development of materials in languages used in other overseas districts (South America, Asia, Europe). 4. Networking with other religious organizations. 5. Sharing successful overseas propagation approaches with Japan.

The **JSIO** will be a legal U.S. non-profit organization registered in California. It will be governed by a Board of Directors made up of the Bishops of Canada, Hawaii, South America, and the Buddhist Churches of America, the Governor of Honzan's International Department, and the Supervisor of the International Center at Honzan. There will be an Advisory Council made up of lay leaders and ministers presenting overseas districts. Bishop Matsumoto appointed Rev. Tomioka and me to represent Hawaii Kyodan.

The operation of the **JSIO** will be funded with revenues derived from an endowment established by Honzan.

I look forward to helping guide this important organization to develop realistic and effective projects that reach to the people who can most benefit from the Nembutsu. We are at a time and place in Hongwanji history that we begin reaching into diverse groups that may be separated by ethnic identity, culture, sexual orientation, age, and geography but who can find common spiritual sustenance in Namo Amida Butsu.

If you are interested in the workings of the JSIO, please contact me at: [ptoyama@honpahi.org](mailto:ptoyama@honpahi.org)

## CONDOLENCES

**Mrs. Carol Yamamoto**, a member of Honpa Hongwanji Hawaii Betsuin, passed away on March 14, 2019. Mrs. Yamamoto served as Hawaii Betsuin Upasika Society President from 1994 to 1995, Hawaii Federation BWA President from 2004 to 2007 (13<sup>th</sup> World BWA Convention in 2006), Honolulu United BWA President from 2000 to 2001. She has been a Hawaii Betsuin BWA Executive Board member since 2003 and on Project Dana Executive Board as well as serving on Hawaii Betsuin Board of Directors until the end of 2015. The Ingo (Posthumous Title) of AN-NYO-IN 安養院 which means "One who nurtured peace and serenity" in recognition of her life of Nembutsu was conferred by Bishop Eric Matsumoto on June 1, 2019.

**Mr. Tatsumi Imada**, a member of Kahului Hongwanji Mission, passed away on May 10, 2019. Mr. Imada served as President from 1978 to 1979. The Ingo (Posthumous Title) of SHU-SHOU-IN 殊勝院 which means "One who is Unsurpassed and Unmatched" in recognition of his life of Nembutsu was conferred by Bishop Eric Matsumoto on June 8, 2019.

## YBICSE

The following individuals were selected for the 2019 YBICSE (Young Buddhists' International Cultural Study Exchange) which is scheduled for July 15 – 27, 2019. Its basic purpose is for young Jodo Shinshu Buddhists to deepen their understanding and appreciation of the Nembutsu teaching by visiting our Mother Temple or Honzan, the Hongwanji, experiencing a home stay, and traveling to several historical and/or significant sites with fellow young Buddhists.

### Participants (9):

- |                         |                                |
|-------------------------|--------------------------------|
| 1. Alexandrianna Harman | Honpa Hongwanji Hawaii Betsuin |
| 2. Kayla Koyanagi       | Aiea Hongwanji Mission         |
| 3. Everett Suzuki       | Pearl City Hongwanji Mission   |
| 4. Lauren Suzuki        | Pearl City Hongwanji Mission   |
| 5. Koji Suzuki          | Pearl City Hongwanji Mission   |
| 6. Jay Rikio Acohido    | Wahiawa Hongwanji Mission      |
| 7. Shoshi Hashimoto     | Wahiawa Hongwanji Mission      |
| 8. Kai Okuni            | Makawao Hongwanji Mission      |
| 9. Donovan Ikeuchi      | Wailuku Hongwanji Mission      |

### Chaperone (2):

- |                          |                            |
|--------------------------|----------------------------|
| 1. Rev. Shinkai Murakami | Wailuku Hongwanji Mission  |
| 2. Gay Tanaka            | Mililani Hongwanji Mission |

## BISHOP'S AWARD

On behalf of the Honpa Hongwanji Mission of Hawaii Japanese Language School committee, it is my great honor and privileged announce 2019 Bishop's award recipients as followed;

Fort Gakuen	8th grade: Akira Iwata
Hilo Hongwanji Gakuen	6th grade: Yoshikazu Taufah Farmer 8th grade: Dari Mariko Nekoba
Hongwanji Mission School	8th grade: Jennifer Kiyoko Murakami
Wailuku Hongwanji Gakuen	6th grade: Jancyn Marika Shishido 8th grade: Chelsey Miwa Konno

All of them received this special honor award at their graduation day which was held in May, 2019.

Thank you,  
In Gassho,  
Rev. Shinkai Murakami,  
Chair, Japanese Language School committee

## SOCIAL CONCERNS

1. The Committee on Social Concerns, in coordination with the Office of the Bishop, provided an omimai to Paaulo Hongwanji. The temple waterline was damaged from an earthquake.
2. The following recommendations by the Committee on Social Concerns were approved on May 11th by the HHMH Board of Directors:
  - A \$5,000 donation to the Samaritan Counseling Center Hawaii.
  - A \$3,000 donation to support) Hongwanji temples designated as host streaming centers with reimbursement of refreshment costs associated with the suicide awareness/prevention workshop at Saint Louis High School (co-sponsored by the Samaritan Counseling Center Hawaii and BDK Hawaii).
  - A \$2,500 donation to support the construction of the Wallyhouse Peace Garden at St. Elizabeth's Episcopal Church with the primary objective to promote peace and help the families of the community nearby the church. (Besides funding from St. Elizabeth's Episcopal Church, other donors include the Ifuku Foundation, the Atherton Foundation, Episcopal Diocese of Hawaii, United Thank Offering, St. Elizabeth's Youth Group, and Hou 'Aina of Makaha Farm).
  - A \$500 donation to a fundraising campaign initiated by the Seventh District Baptist Association in Louisiana to help rebuild the three churches destroyed by arson in apparent hate crimes.
3. The Golden Chain of Love Grant (formerly called the Golden Chain Grant) can be found at the following link: <http://bit.ly/goldenchain2018>. Temples and affiliate organizations are encouraged to develop projects and submit a grant request for funding considerations.
4. 2018-2019 Social Concerns Fund drive - please send in your temple donations to headquarters by **August 31, 2019**. During the month of September, the Committee on Social Concerns will begin to close out the fund drive. The 2019-2020 fund drive will commence in November. Thank you very much for your generous donations each year!
5. Reverend Blayne Higa began to serve as the co-chair of the Committee on Social Concerns. Reverend Higa previously served as the chair of this committee and we are grateful for his service and dedication.

## 2019 PAN PACIFIC FESTIVAL PARADE SUCCESS!

Thanks to the participation of 54 sangha members, relatives and friends, we celebrated our ***"130<sup>th</sup> Anniversary of the Honpa Hongwanji Mission of Hawaii"***, also promoting September 21 Peace Day Hawaii, as we embraced our theme, ***"Walk in Peace"***. Our international leader Bishop Eric Matsumoto received the invitation to the parade, he shared it with our Peace Day Committee who applied to enter



the parade, and he gladly agreed to lead the parade with his wife Tamayo and children Chika and Caden. We walked with signs of our Hongwanji temples, and we carried sticks with the Sadako Cranes for Peace donated by Hawaii Betsuin BWA.

It was the first time we entered the Pan Pacific Festival Parade, and we were being cheered by the parade watchers, and our participants represented our Hongwanji Ohana with much aloha! It was great to see names of temples in the parade: Honpa Hongwanji Hawaii Betsuin, Moiliili Hongwanji, Aiea Hongwanji, Mililani Hongwanji, Wahiawa Hongwanji, Waipahu Hongwanji, Makawao Buddhist Temple, Hilo Betsuin, Honokaa Hongwanji, Kapaa Hongwanji, Kahului Hongwanji, and United Nations Hawaii. Honolulu and Aloha Pono Lions Clubs, Alea Bridge and State Representative Stacelynn Eli, and Senator Donovan Dela Cruz also joined our parade!



Much mahalo to the shuttle drivers Dean Sakamoto, Stan Sasaki, and Brandon Hee, and to everyone for helping to make this a successful and memorable experience.

Namo Amida Butsu!  
 Rene Mansho  
 Peace Day Committee Chairperson



## ERRATA

On behalf of the HHMH Calendar Committee, we hope that the Sangha of Honpa Hongwanji Mission of Hawaii is enjoying the 2019 Hawaii Kyodan Calendar which tries to capture some of the highlights and matters of significance of Hawaii Kyodan especially for the first half of our history in Hawaii. However, I would like to bring to your attention two corrections. For the month of June, please delete the words "in collaboration with Kosaku Yamada" from the month's caption. Also, for the month of October, for the photo caption about Fort Gakuen, please correct "Fort Lane" to "Fort Street." Our sincere apology. Thank you. HHMH Calendar Committee

## HONOLULU DISTRICT NEWS

### WINDWARD BUDDHIST TEMPLE

Prepared by Prudence Kusano

- **GUEST SPEAKERS** in the first half of this year at our Weekly Services featured :  
Rev. Okano, Dennis Tashiro, Cyndi Osajima, Rev. David Nakamoto, Dr. Michael Jaffe, Rev. Muneto, Joy Nishida, Rev. Takahashi, Mernie Crawford, Rev. Tomioka, Shirley Yanagisawa, Prudence Kusano, and Bob Nishita.  
If temples are interested in contacting these speakers, we can assist you.
- **THE WINDWARD BUDDHIST TEMPLE STRATEGIC PLAN** was created prior to the completion of our new temple 4 years ago. Thus far, we met two more of our goals 1) to establish a Dharma School and 2) to start adult Dharma Classes. We have 5-7 Dharma School students each second Sunday. Two members agreed to serve as Dharma School teachers. We started an adult Dharma Classes on April 20. Classes are held every Saturday morning. There are at least 10 students in the class. A majority of the students are not regular Sunday service attendees. More non-Japanese people are finding their way to the temple and attend services regularly. Some of the new people are from the Kaneohe Marine Corp base. We are hoping that this will allow our temple to serve the Marines seeking to learn more about Buddhism.
- We are pursuing a way to visit the old **JAPANESE CEMETERY IN WAIMANALO** which is now located on the Bellows Marine Corp site. The goal is to clean the cemetery with the help of the Waimanalo community and to have annual Obon Service at the site.

## OAHU DISTRICT NEWS

### WAHIAWA HONGWANJI TEMPLE

Prepared by Rod Moriyama

- **SPECIAL SPEAKERS**  
On April 7, we had **KEALOHI JOHNSON** from Wahiawa talk about Planning for End of Life. She is from Wahiawa and a former teacher and dental hygienist. She pointed out Seven Obstacles that make the process of dying difficult.
  1. People don't think about it.
  2. People don't put things in writing so people trying to figure out where all your assets are have a tremendously difficult time (including looking for passwords). Do you have a power of attorney for financial matters? Where are the important documents?
  3. They don't talk to their family about what they really want as they approach dying.
  4. People are unhappy. "If you are unhappy in living, you are unhappy in dying. Be grateful for three things everyday."



5. You are resentful and regretful. Holding on to regrets makes dying very difficult. Anger is a punishment we give ourselves.
  6. Some people feel entitled to a different outcome. Acceptance of the reality of life is key.
  7. Don't let doctors make all the decisions. Know your options!
  8. (go to: <https://prepareforyourcare.org/advance-directive-state/hi> )
- **REVEREND EARL IKEDA** from the New York Buddhist Church gave a wonderful dharma talk about the stories behind Shakyamuni's day of birth and their meaning. It was the first time we successfully video conferenced all the way to New York. Some of the key messages that stuck in my mind are:
    - Siddhartha means "every wish fulfilled."
    - Shakyamuni Buddha was a human, not a "god." He saw "Life as it is; everything has cause and effect."
    - Teachings of the Buddha are guidelines, not judgmental hard and fast rules. "Understand myself first; then help others." It helps us transcend this life.
    - Shakyamuni becomes the spokesman for the BEST that we can be. No judgment or discrimination...example lemon vs. sugar....it is what it is (sour, sweet), no better.
    - The Buddha is YOU and ME!

For more information on how to video conferencing special speaker, please contact me at:  
[rmoriyama@gmail.com](mailto:rmoriyama@gmail.com)

#### **PEARL CITY HONGWANJI WISTERIA CLUB**

On May 19, 2010, the former Chojukai moved to the newly renovated upstairs corner classroom now named Wisteria Room. At that time, the members decide that they were ready for a name change for the club. Thus, the Chojukai became the **WISTERIA CLUB**. With the change in name, the club began to attract more English-speaking members. Currently, there are 28 members and growing. The Wisteria Club is made up of temple members and friends of Pearl City Hongwanji. Together, we are embracing the compassion, wisdom and understanding of our community sangha.

The purpose of the Pearl City Hongwanji Wisteria Club is to promote fun and fellowship through a variety of activities that include exchanging of ideas and information, learning new crafts, such as ribbon-lei making, origami gift-box making, jewelry making, cooking demonstrations, mochi making for New Year's, gingerbread house construction for Christmas. Members also learn about historical events, art works and artists, nutrition and health care, playing new games, hanafuda, bingo. The monthly birthday celebrations are special. At the end of each meeting we share a potluck meal. Through all of these activities, we hope to embrace the Nembutsu teachings of Amida Buddha.

## KAUAI DISTRICT NEWS

**DHARMA SCHOOL SUNDAY SERVICE:** On May 5, 2019, the West Kauai Hongwanji, Lihue Hongwanji and Kapaa Hongwanji members and friends joined together for a Dharma School Sunday Service at Salt Pond Beach Park in Hanapepe, Kauai. The setting for the service was beautiful. The gathering consisted of elementary children, high school students, parents, grandparents and Ministers. Everyone enjoyed the ice breakers, games and activities which were prepared for the various age groups. Lunch and fellowship culminated the event. It was a happy and especially fun day for all!



### LIHUE HONGWANJI ACTIVITIES

Lihue Hongwanji members are involved in the community through a number of activities. These include:

- **Lonesome Grave Project.** The Kauai BWA decorates the Veterans Memorial Cemetery on November 10, one day prior to the public service on Nov 11.
- **American Cancer Society Relay For Life** held in April. Our team LHM Dharma Dragons has collected over \$10,000 every year. We have been doing it for the last 6 years.
- **"Home Bound" Visitation.** Once a year around December, the "Home Bound" Committee members make a small bento consisting of barazushi and manju for those over 90 years old or anyone who cannot leave their residence. A small plant or article is given to those who are in the Care Homes.
- **"Asian Blend" Bazaar.** The majority of the items sold are Asian-themed. This has caught on pretty well with the public.

## MAUI DISTRICT NEWS

### WAILUKU HONGWANJI ACTIVITIES

- Students, parents and staff of the Dharma School will hold a special service on June 16. After the service, students will serve a **FATHER'S DAY BRUNCH**. Everyone is encouraged to bring their father, grandfathers, along with their mothers, grandmothers, brothers, and sisters, to the brunch.
- Wailuku members are planning **A VISIT TO THE MAUI OCEAN CENTER** on June 29. The excursion features a 3-D film "Humpbacks of Hawaii" and lunch at the Reef Café.
- **Committee to make final push to reach goal of \$120,000; \$23,385 to go!**  
Michael Munekiyo, Chairman of the 120<sup>th</sup> Anniversary Fund Drive Committee, stated, "With less than five months to go, the committee would like your help in reaching its \$120,000 goal. To date, we have received donation of \$97,039.99. We need \$22,960 to reach our goal." He continued, "I would like to ask our friends to consider making a donation to the temple and support this project." Your donations will help fund the handicapped restroom and purchase the photovoltaic system.

## HAWAII DISTRICT NEWS

### HAWAII HONGWANJI COUNCIL ACTIVITIES

Reported by Helen Shiota-Benevides,  
Hawaii District Council President

The Hawaii Council is busily planning the upcoming 56th Hawaii State Federation of Honpa Hongwanji Lay Association Convention happening in September on the Big Island. We are planning fun-filled, exciting and interesting program events focusing on our theme: Embrace Change, "Strive to Survive and Thrive".

- One delicious tidbit is our meal service committee are planning a Filipino and Japanese Theme, Plantation Day's Food. Yummy and onolicious!!
- We are also planning a special bus trip on Hwy 19 (Hamakua Coast) to visit some of our temples and get an overview of what's happening and how they are striving. Remember the yellow school bus we use to ride to school? How memorable times we had. This will be everyone's unforgettable transportation experience!
- We will end our temple visits with a stop-over at Kamuela Hongwanji Temple for a delicious lunch and a Somen Nagashi eating experience. Bring your special "Chopstick's"!

More detailed program schedule of events will be communicated soon to your Temple President. Check with your temple leaders on how you may sign up for this event.

### KOHALA HONGWANJI ACTIVITIES

#### Field Trip!!!!

Members met at Kohala Hongwanji on May 19 for a visit to the site of the **ORIGINAL KOHALA HONGWANJI**. A special service was held at the cemetery. Mr. Uehana, Debbie, and other temple members shared their

memories. Lunch was served at the temple after the field trip. Thanks go to Kehau Hedlund who allowed us to drive on to her property to see where the temple was located.

### KONA HONGWANJI ACTIVITIES

- Kona welcomed its **NEW RESIDENT MINISTER**, Rev. Blayne Higa, at its Mother's Day Sunday service.
- Kona Hongwanji will kick off **THE OBON SEASON** by sponsoring the 16th Annual Obon Festival at Keauhou Shopping Center on June 1. The temple's Obon Dance will be on July 27.
- Our **TAIKO GROUP** will be participating in multiple bon dances stretching from Paauilo to Naalehu on the Big Island. They will be performing at a Bon Dance every Saturday through July & August.

### NAALEHU HONGWANJI ACTIVITIES

**EXCITING NEWS!** Naalehu will be having its first Obon Festival August 31, 2017. This will be the first time in our community in over 10 years. We and the community are excited to bring back this important tradition. In addition, our temple offers Qi Gong classes, Yoga and a weekly Dharma study classes that uses the "Guide to Jodo Shinshu Teaching and Practices."

### FOUR TEMPLE ACTIVITIES

The Four Temple Hongwanji Council consists of Honohina, Honomu, Papaaloa, and Papaikou Hongwanjis. Their Chicken Sausage-making fundraising events are legendary. If you are on the Big Island in October and April, make sure you contact: Rev. Kawagoe at: [skawagoe@honpahi.org](mailto:skawagoe@honpahi.org) to purchase your homemade chicken sausage. It is a Big Island delicacy!!

Funds from these events help with each temples assessment payments and keeps membership dues stable.

### BWA NEWS

The Buddhist Women's Associations around the state have been busy putting Dharma-centered leadership into action in their temples and communities.

Throughout the month of April, many BWA members gave Dharma talks at services to honor Eshinni and Kakushinni, the wife and daughter of Shinran Shonin. These two women were instrumental in the founding of the Hongwanji. BWA members displayed pictures of Eshinni and Kakushinni, prepared special flower arrangements, and served refreshments. As Dharma speakers, BWA members shared stories of these two important women as well as their own journeys to a life of Nembutsu. Mahalo to all of the women who put time, thought, and love into these presentations.

May was the month to honor our high school graduates. Many BWA Units and Uniteds gave scholarships to graduating seniors. Kauai United BWA gave \$1,000 scholarships to four young women who were all valedictorians of their respective schools! Kauai United President Lynne Matsumura said that the girls, who were interviewed by ministers and BWA representatives, showed remarkable poise and maturity in

answering questions regarding Buddhist teachings and how they apply Buddhist values in their everyday lives.

The BWA student exchange ambassadors for 2019 are Chloe Oshiro and Katelyn Otani. Chloe, a member of Mililani Hongwanji, graduated from Mililani High in May. Katelyn, a Pearl City Hongwanji member, is a junior at the University of Northern Colorado. They will travel to Japan in July where they will be hosted by members of the Japan BWA Federation.

The Hawaii Island United recently participated in the Big Island AIDS walk. Every year they help to staff the event, raise funds, and field a team of walkers wearing their purple shirts!

Many people think the BWA is just about cooking (we do love our food!), but we also love to plan. And sometimes we plan about cooking! On June 8<sup>th</sup>, the Kapaa Hongwanji BWA, in cooperation with the Japanese Cultural Society, will be hosting a sushi making workshop in celebration of the Hongwanji's 130<sup>th</sup> Anniversary. The public is invited.

On August 10<sup>th</sup>, Honolulu United will hold a Blue Zones workshop and annual meeting at Jikoen Hongwanji. Blue Zones is a project which promotes healthy eating, moderate exercise, spirituality, and social connections for a long and happy life. Oahu United held a Blue Zones workshop in May. Most BWA Units and Uniteds throughout the state are learning about and sharing these concepts.

Maui United BWA is undertaking a peace project initiative in cooperation with the Hongwanji State Peace Day Committee. During August, each Unit will set up a Peace Day exhibit featuring large folded cranes prominently displayed on temple grounds. Cranes will be added to the growing display as the weeks progress. Other activities are being planned at every temple such as joint bell ringing with churches and peace walks. The culminating event will take place at Makawao Hongwanji on Peace Day, September 21<sup>st</sup>. Members of affiliates and the community will be invited to participate in peace-themed activities.

As part of their regular activities, members of BWA Units and Uniteds make financial contributions to or provide services for homeless populations, domestic violence shelters, the Blood Bank of Hawaii, and other non-profit organizations. They visit care homes and participate in activities with the residents, clean cemeteries and the Ehime Maru memorial site, and do countless other acts of Dana.

But girls also wanna have fun! Members of Aiea BWA took a trip to Hokkaido in May with other temple members and friends. Members from throughout the state are looking forward to attending the World Buddhist Women's Convention in San Francisco in late summer where the convention theme will be "Live the Nembutsu."