

Dharma Wheel

Lihue Hongwanji Mission, a Shin Buddhist Temple

VOLUME 67 ISSUE 12

DECEMBER 2014

Path of Entrusting: Share Peace!

Contact Information:

- * *Minister:*
Rev. Kazunori Takahashi
- * *P.O. Box 1248*
Lihue, HI 96766
- * *Phone:*
808-245-6262
- * *Parsonage:*
808-245-4543
- * *Emergency:*
808-245-6262
- * *Preschool:*
808-245-7857

Inside this issue:

Calendar	2
Visitation Sched.	2
Rev. Takahashi's Message	3
Lay Message	4
Honpa Information	5
Announcements	6-9
Memorials	10
Acknowledgements	11

Homebound Project



The purpose of the Kyodan Homebound Project is to extend aloha and good will to members who are 90 years of age or older, to those who are homebound or living in an assisted living facility, and to those in long-term care facilities during the season of compassion and selfless giving.

The project began when the late Michael Nii was Kyodan president and Reverend Yukiko Motoyoshi was the resident minister. At that time, it was brought to the Board of Directors attention that the church needed to recognize and extend its appreciation for elderly members. Thus, the Homebound Project began and was assigned to the Kyodan Aloha Committee which promotes the good will and welfare of the membership.

The project has since been supported and financed by the labor of the Lihue Hongwanji Women's Association and the Kyodan respectively. Every December, church members visit with and deliver to qualifying members, gifts of barasushi and manju, and those in care facilities have received lap blankets or quilts, jackets, booties, socks, or warm caps. While the gift of food remains the same, the gift for members in long-term care facilities differs from year to year. This year, those in care facilities (5 members) will receive a mini Butsudan for their nightstand. The bento boxes will be delivered to 33 members who are age 90 and above, homebound, or in an assisted living facility.

This year, elderly members will be recognized on Saturday, December 13. Please call the church at 245-6262 if you have any concerns or questions.



Calendar of Events

DECEMBER

Sun	7	9:30 AM	Bodhi Day Service, Waimea Theater No service at LHM
Tues	9	7:30 PM	Board of Directors Mtg.
Sun	14	8:00 AM	General Clean-Up General Membership Meeting & Election No Service
Sun	21	9:00 AM	Family Dharma Service
Sun	28	9:00 AM	Family Dharma Service Birthday & Memorial Sunday
Wed	31	10:00 PM	New Years Eve Service Kapa'a Hongwanji

JANUARY

Thurs	1	10:00 AM	New Year's Day Service Installation of Board of Directors for 2015
Sun	4	9:00 AM	Family Dharma Service Birthday & Memorial Sunday
Tues	13	7:30 PM	Board of Directors Mtg.
Sun	11	9:00 AM	Family Dharma Service
Sun	18	9:00 AM	Hoonko Service Spkr. Rev. Kojun Hashimoto
Sun	25	9:00 AM	Family Dharma Service

Visitation Schedule

Wed	Dec. 10	2:30 PM	Regency at Puakea Service & Visits
Wed	Dec. 17	9:30 AM	Mahelona Hospital Ext. Care Service/Visitation
Tues	Dec. 30	10:00 AM	Wilcox Hospital / Garden Island Health Care Service/Visitation

Members and friends are welcome to accompany the minister at service and visitation outreach. Please contact Rev. Takahashi in a timely way.

Privacy and confidentiality rights of individuals limit the clergy from visiting persons in medical, residential and care-home facilities without the express request/consent of the family. Our minister is happy to visit members and friends, but by law, such visits require a referral from the family. Please contact Rev. Takahashi at 245-6262 or 245-4543.

Temple Decorations

Please deliver flower donations by **THURSDAY** evening.

<u>2014 –2015 TEMPLE DECORATION</u>	
December 4, 11, 18, 25	Pua Loke II/Puhi
January 8, 15, 22, 29	Isenberg I/Gym
February 5, 12, 19, 26	Isenberg II/Isenberg III

All flower
donations will
be gratefully
accepted.



**** Please check the temple terrace in the back of the social hall for flowers.****

ARTICLES FOR THE BULLETIN ARE DUE IN THE OFFICE BY THE 20TH OF EACH MONTH.

IF POSSIBLE, PLEASE SUBMIT ARTICLES VIA EMAIL TO lhnews@yahoo.com

Cleanup

Time passes quickly and the end of the year is approaching. We will be holding our annual general cleanup this month. It is significant to clean our temple together as we start to prepare for the New Year. Thank you in advance for your continued support.

Speaking of cleanup, I remember an episode of Cuuda-pantaka or Shuri Handoku, one of Sakyamuni Buddha's disciples. He became a disciple of the Buddha, but he had difficulty in learning the teachings and the ways of practices because he always had a hard time memorizing all kinds of information.

One day, Cuuda was going to give up the practice and to quit being a disciple of the Buddha because of his ability. However, Sakyamuni Buddha stopped him and told that he didn't need to think about the teachings and the practices. Then he gave Cuuda a broom and asked him to use it every day to clean up the monastery while reciting the phrase "Sweep dust. Remove dirt." Cuuda was an eager person, so he just concentrated on sweeping everyday.

One day after a long period of time, Cuuda came to realize what Sakyamuni Buddha wanted to teach him. Then he visited Sakyamuni Buddha and said to him, "I realized I was sweeping every day, but dust and dirt had built up again and again. The same goes for my mind. Dust and dirt of my blind passions arise again and again. But I realized that the Buddha Dharma can purify them." Thus, he realized Sakyamuni Buddha's intention and came to be regarded as an excellent disciple by others. Sakyamuni Buddha taught the essence of the teachings by making Cuuda concentrate on sweeping.

This episode would give us some lessons. It would be easy for us to find dust and dirt when we clean our surroundings. However, it would be hard to notice dust and dirt of our blind passions that would be accumulated in our mind. If we don't care about them, they would be built up without being aware of them and bother us. We cannot see our own mind directly, but we can reflect on ourselves with the teaching of Buddhism.

Shinran Shonin said: **The radiance of enlightenment, in its brilliance, transcends all limits; Thus Amida is called "Buddha of the Light of Purity." Once illuminated by this light, we are freed of karmic defilements and attain emancipation.**

(“Hymns of the Pure Land, *Collected Works of Shinran*, p.326”)

When we clean our room, we may sometimes notice much dust through the sunlight that shines into the room. If a room is not bright, we hardly notice dust. Shinran Shonin teaches us that Amida Buddha's light enables us to be free from defilements of our blind passions. It is hard for us to remove dust and dirt from our mind completely, therefore it would be significant to listen to the teaching of Buddhism with self-reflection and gratitude. In this year-end season, let us clean our temple and our surroundings, reflect on ourselves with the teaching of Nembutsu and prepare a fresh start for the New Year. Namo Amida Butsu.

Why am I a Buddhist?

Gail Shibuya

At this year's Hanamatsuri, or Buddha Day Service, Gerald Hirata gave an interesting dharma talk about why are we Buddhist. So many of you were born into a Buddhist family. Did you ever think about not being a Buddhist and joining another church? Well, this is my story

My dad was a practicing Catholic and my mom was a silent Buddhist. The only thing we did that was Buddhist was to put rice and water by my grandparents' urns. There was no Obutsudan. Not knowing any better, I followed my mother's example by lighting a candle, offering rice and water, putting my hands together and bowing my head not knowing that it was a Buddhist ritual. I thought it was just a Japanese thing to do. I went to a Catholic school, had religious studies every day in school and went to church every Sunday. My brothers also went to the same Catholic school and they became altar boys while attending school. I used to ask myself, "Why do I have to go to confession every time if I wanted to receive communion at mass?" I couldn't ask the nuns, in fact, I was afraid to ask them any questions. Those days, one did not ask questions. So I would go to confession on Saturday and make up some kind of lie just so I could receive communion on Sunday. Now I had a reason to go to confession.

When I was in my late teens, I began to really question the religion. So I asked my parents if I could go to another church with my friends just to see what it was all about. My friends were going to the Missionary Church in Kalaheo. But even there I wasn't satisfied. To me it was the same as attending the Catholic Church. Attending a Buddhist Temple was out of the question – I had no one to take me and the closest one was Hanapepe or Koloa. Would you believe that at that time it was considered a major sin to attend a different church?

I continued to attend mass with my dad until my first year at Kauai Technical School. One day, my mom asked me to go to the airport and pick up an old family friend, a priest. While bringing him home I asked him why did the pope condemn the war in Viet Nam and yet he was for the war in Ireland. His answer troubled me. He said the Viet Nam war was an immoral war and the war in Ireland was a religious war. Now that did not make any sense to me both sides were killing each other. Another question I put to him was on contraceptives. How can the church tell the women what to do with their body. Who was going to feed all the hungry babies? Would the church support the families that kept having babies? That he could not answer me.

When did I become a Buddhist? The day I married my husband. We got married in a Buddhist Church and by doing that I was excommunicated from the Catholic Church. It was Laura Hirokawa who invited me to attend church with her and this was back in the late sixties. The members were very friendly and welcomed me into the fold. I tried to understand Rev. Ryosho Kondo at that time but came away more confused. But I continued to attend church on Sundays with her. But it wasn't until I attended my first Nembutsu Seminar that I found out that Buddhism was really for me. If I remember correctly, the speaker was Rev. Unno, I can't remember which one, but he made Buddhism so interesting. Why was Buddhism for me? The answer was so simple. The answer came from a little girl. She was so afraid to attend the Catholic Church because she was taught that God would punish her if she was bad. This is what I was taught when I was attending church too. Can you imagine going through life thinking "I'm going to burn in hell if I do something bad." For sure marrying outside of the Catholic Church was a grave sin! And if I remained a Catholic where do you think I was heading for when I died?

(continued on page 6)

Web: www.hongwanjihawaii.com Email: hqs@honpahi.org

2015 Giseikai

The 2015 HHMH Legislative Assembly (Giseikai) will be held on February 13 & 14, 2015 at the Honpa Hongwanji Hawaii Betsuin. The Registration form and other documents that need to be submitted for Giseikai were already sent to the temples and organization leaders. Please submit all the necessary documents to HQ by the deadline described in the letter. The packet containing materials for Giseikai will be distributed to each temple at a later date. Thank you very much for your cooperation.

2015 Living Treasures of Hawaii recognition Luncheon

The Honpa Hongwanji Mission of Hawaii will honor the following individuals as the 2015 Living Treasures of Hawai'i™ in recognition of their personal and professional achievements and their contributions to the community. We welcome you to celebrate this honor with them.

Blossom Puanani Alama Tom

S. Haunani Apoliona, MSW

Dr. Bernice Kisako Hirai

Paulette Nohealani Kahalepuna (Posthumously)

Laura Ruby

Barry K. Taniguchi

Date: Saturday, February 14, 2015 Place: Hilton Hawaiian Village, Coral Ballroom

Time: 11:00 AM Registration, 12:00 PM Lunch and Program

Cost: Early registration - \$70.00 for payments received by January 31, 2015

Late registration - \$85.00 for payments between February 1 - February 7, 2015

(Reservations will NOT be accepted after February 8, 2015)

Sponsor Tables are available: Gold - \$5,000; Silver - \$3,000; Bronze - \$1,500

IMOP Ministers' Internship in Hawaii

Honpa Hongwanji Mission of Hawaii welcomed two ministers who were in the International Ministerial Orientation Program (IMOP) at the Jodo Shinshu Center in Berkley, CA. During the three-month program, the participating ministers take classes at the Institute of Buddhist Studies, receives lectures from the Kaikyoshi (Overseas

Minister) and members, attends Sunday Services, and observes Kaikyoshi's duties and responsibilities to deepen his/her understanding and aspiration to become a Kaikyoshi Minister in Overseas districts. The Kaikyoshi aspirants from Japan must complete the IMOP in order to be officially considered for Oversead assignment by Honzan (Mother temple in Kyoto). Honzan will then dispatch the new minister to Honpa Hongwanji Mission of Hawaii, Buddhist Churches of America, or Jodo Shinshu Buddhist Temples of Canada based on the needs from the district and the aspiration of the minister.

This year Honpa Hongwanji Mission of Hawaii once again supported this program by welcoming two individuals for their 12 days internship in Hawaii. This year's IMOP participants, Rev. Joshin Kamuro and Rev. Makoto Ichiwa, went through the Internship in Hawaii from October 30 to November 10 under the supervision of Rev. Toshiyuki Umitani. They both showed their great interest in becoming a Kaikyoshi Minister in overseas districts.



Donation for the Hiroshima Landslide victims

Jodo Shinshu Hongwanji-ha Aki District Office launched a campaign to assist those who were seriously affected by nearly 50 heavy landslides that took place on August 20 in Asa-Minami and Asa-kita wards in Hiroshima city. These are the areas where historically many members of Honpa Hongwanji temples are living. Honpa Hongwanji Mission of Hawaii Social Concern Committee, together with Honpa Hongwanji Hawaii Betsuin, sent a donation of \$8,795.00 (Social Concern \$2,000, Hawaii Betsuin \$5,795, Hawaii Betsuin BWA \$1,000) to Hongwanji-ha Aki District Office through Honzan International Center.

(continued from page 4)

I became very good friends with Rev. Yukiko Motoyoshi and in her own gentle way she was teaching me about Buddhism. She said something that I really liked. She said Buddhism was a gentle religion there was no killing to convert someone to Buddhism. I thought to myself that is so true. Christianity was a very brutal religion; there were so many killings.

Someone told me that I am very religious because I go to church every Sunday. I told her "No, I am not religious". I go to church every Sunday because I need to be reminded about the 8 Fold Path and The Four Noble Truths. Without these reminders I think I would be a very difficult person. By reciting the Golden Chain of Love and the Four Noble Truths – it's already telling me how to live my life in peace and harmony.

New Year Services

We will be having joint services with Kapa'a Hongwanji for the New Year. For this reason, we will be following this schedule:



New Year's Eve Service

December 31, 2014

10:00 PM at Kapa'a Hongwanji

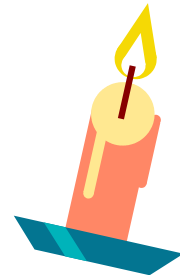
New Year's Day Service

January 1, 2015

10:00 AM at Lihue Hongwanji

Kauai Hospice Candle Lighting Memorial Services will be held as follows:

- 12/01, 6:00pm at Immaculate Conception Church in Lihue
- 12/04, 6:00pm at West Kauai Hongwanji in Hanapepe
- 12/08, 6:00pm at Wai'oli Hui'la Church in Hanalei



Lights on Rice

Please join the Lihue Hongwanji Preschool as they walk in the Lights on Rice Parade on December 5. All members are welcomed to join in the parade.

Please meet at Vidinha Stadium at 5:00 pm. Carpool or be dropped off at the stadium, as the parade ends at the County Building on Rice Street. If you are planning to walk in Lights on Rice with the preschool, please call Sandie Fujimoto to make arrangements, Sandie can be reached at the Lihue Hongwanji Preschool, 245-7857, between the hours of 7:00 am and 4:00 pm.



Annual Cleanup Sunday

December 14 at 8:00 AM

Followed by

General Membership Meeting

Election of 2015 Officers & Directors

LUNCH & REFRESHMENTS WILL BE SERVED



Everyone,
please come
out and help!

BODHI DAY

December 7 @ 9:30 AM

Hosted by Waimea Higashi Hongwanji

at Waimea Theater

Parking is limited. If you need transportation to Waimea, please call the office at 245-6262 by December 3.

(There will be no service at Lihue Hongwanji Mission)



Ohana Arts & Honpa Hongwanji Mission of Hawaii

"Peace On Your Wings" is a fictional story inspired by the life of Sadako Sasaki. Set in post-war 1950's Japan, it explores the lives of students at a middle school in Hiroshima as they face the terminal illness of their friend amidst their own adolescent drama..

PRESENT:

PEACE ON YOUR WINGS

AN ORIGINAL MUSICAL
INSPIRED BY THE LIFE OF
SADAKO SASAKI




Music by Jenny Taira, Lyrics by Laurie Rubin
Book by Jenny Taira & Laurie Rubin
Directed by Cari Lee

TICKETS: \$15 General/\$10 Students

ONLINE PURCHASE:

KauaiPeaceOnYourWings.BrownPaperTickets.com
or call Lihue Hongwanji at 245-6262

DOOR: \$20 General/\$15 Students

MORE INFO: ohanaarts.org   



ohanaARTS
performing arts festival & school

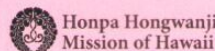
 **SPECIAL KAUAI PERFORMANCE**

January 25th 2:00 PM

Kauai Community College
Performing Arts Center
3-1901 Kaumualii Hwy, Lihue

ALL AGES WELCOME

SPONSORS



“Peace On Your Wings”

“Peace On Your Wings” is a fictional story inspired by the life of Sadako Sasaki. Set in post-war 1950’s Japan, it explores the lives of students at a middle school in Hiroshima as they face the terminal illness of their friend amidst their own adolescent drama. The musical score combines modern pop and Japanese influences to create a unique, uplifting, and inspiring show.



A Friendly Reminder

If you have not yet sent in your 2014 dues, please remember to send in to LHM by December 31.

Thank you for your help and your generosity.

NEW TV FOR OUR TEMPLE

Thanks to a grant from the Hawaii Community Foundation – Florence Iwamoto Fund, we were able to purchase a new 65 in. Samsung LED Smart TV, along with a heavy duty mobile cart and a Vizio 5.1 sound bar. This TV replaces the old 32 in. flat panel TV which was a little too small for people in the back row pews of our temple to view easily. This new TV will help our speakers communicate their messages and also show the various temple activities that our historian James Yamamoto has recorded. With the aid of laptop computers we will try to make our presentations more interesting and communicate better. We urge you to come to our Sunday services and see what we are doing.

Parsonage Remodeling Update

Since the parsonage was built around 1970 very few upgrades have been made. To enhance the living conditions for our minister, improvements to the parsonage have recently been completed and others are planned for the near future:

1. Completed
 - a. Kitchen plumbing fixtures replaced
 - b. Window blinds replaced in the living room and dining area
2. Planned
 - a. Termite (tenting) fumigation (planned for late December, 2014)
 - b. Replace light fixtures
 - c. Replace shower pan and ceramic tile in 2nd bathroom
 - d. Re-roofing
 - e. Painting inside & exterior



With Deepest Sympathy

Lihue Hongwanji extends its deepest sympathy to the family and relatives of:

The late Mrs. Tokiko Tada who died on November 13, 2014 at the age of 94.

MEMORIAL SERVICE (NENKI HOYO)

DECEMBER 2014–JANUARY 2015

The following is a list of members who passed away during the months of December and January. In Jodo Shin Buddhism, memorial services are observed to remind the family members of the compassion of Amida Buddha in memory of the deceased.

Lihue Hongwanji Mission recommends that the families and relatives of the deceased members listed below contact the temple office at 245-6262 for an appointment.

1st Year Memorial Service—2013

2013 December 31 Kimiyo Fujimoto

3rd YEAR MEMORIAL SERVICE—2013

2013 January 29 Masao Tamura

7th YEAR MEMORIAL SERVICE—2009

2009 January 5 Jose Bernal

2009 January 15 Yasu Minatoya

13th YEAR MEMORIAL SERVICE—2002

2002 December 14 Tsuyoshi Sasaki

2002 December 30 Boyd Sakichi Higashi

17th YEAR MEMORIAL SERVICE—1998/1999

1998 December 30 James Onishi

1999 January 1 Sunao Iwamoto

1999 January 19 Juro Higuchi

1999 January 24 Kisako Yamamotoya

25th YEAR MEMORIAL SERVICE—1991

1991 January 16 Asayo Sora

33rd YEAR MEMORIAL SERVICE—1982/1983

None

50th YEAR MEMORIAL SERVICE—1966

1966 January 2 Mitsuharu Sukehira

1966 January 13 Itsuzo Maeda

If there are any errors or if your name is not listed, please call Amy Yamada at 245-6262 between the hours of 9AM and 12Noon.

MEMORIAL SERVICE:

In Memory of Misao Shimamoto (1 Yr.)
The Misao Shimamoto Family

In Memory of Yoshiko Kono
Gladys Fujiuchi
Winston & Marian Ogata
Hideko Uemura

COLUMBARIUM DONATION:

In Memory of Chiyozo "Joe" Shiramizu &
Shigetaro & Yukuyo Shiramizu
Melvin & Annette Yamaki

In Memory of George & Elsie Toyofuku
Guy & Lori Toyofuku

Anonymous

MAJOR PROJECT DONATION:

James Yamamoto
Mamoru & Amy Yamada

SOCIAL CONCERNS DONATION:

Howard Shinseki
Roy & Carol Fujioka
Miyoshi Fujimoto

Michiko Yamamoto
Arlene Fujikawa
Betsy Sakoda

AUTUMN HIGAN:

Dennis Dodo

EITAIKYO SERVICE:

Gladys Fujiuchi
Miyoshi Fujimoto
Michiko Yamamoto
Sumako Ichimasa

SPECIAL DONATION:

Roy & Carol Fujioka (Sept, Oct. Nov.)

DONATION TO LHM FOR LHWA'S 110TH ANNIV.:

James & Lillian Amimoto
Natsuko Daida
Arlene Fujikawa
Dennis & Karen Hiranaka
Sumako Ichimasa
Ted & Alice Inouye
Violet Tsuchiyama
Mamoru & Amy Yamada



Lihue Hongwanji Women's Association

Thank you all for your flowers and for coming out and helping us
decorate the graves at Kauai Veterans Cemetery
during our Lonesome Grave
project. Your participation was greatly appreciated by everyone.
Also, thank you for your donations to the LHWA 110th Anniversary. Your

Lihue Hongwanji Mission, a Shin Buddhist Temple

Lihue Hongwanji Mission
P O Box 1248
Lihue, Hawaii 96766-5248

Return Service Requested

NonProfit Organization
U.S. Postage, Paid
Lihue, HI
Permit No. 73

Path of Entrusting:
SHARE PEACE!



Address Label

Email: lihuehong@hawaiiintel.net

WE'RE ON THE WEB!

lihuehongwanjimission.com



New Year's Eve Service

December 31, 2014

10:00 PM at Kapa'a Hongwanji

New Year's Day Service

January 1, 2015

10:00 AM at Lihue Hongwanji

